



# WOMEN FORWARD

I N T E R N A T I O N A L



Women Forward International  
*Advance Women to Advance Humanity*



## Letter from the President



We are at a precipice in our journey as human beings to discover who we are and what we are doing here. The mission of Women Forward International is to support a new mode of being that is already emerging and that will make it impossible for humanity to go on as before –

We have an opportunity: we can teach our next generation to regurgitate facts and figures, claw their way up the socio-political ladder of power, compete and achieve at others' expense, and ignore atrocities and pain pervading the world, especially with regard to the

treatment of half its population – women. Or, we can embrace our next generation's greatest attributes: we can give them the tools to become more conscious and to act on their own higher knowing.

Few other organizations emphasize this higher knowing at the level of academia and in partnership with influential organizations. But our university students thirst to make their research matter and to be of service to humanity. Women Forward provides a channel for them to do so, and in implementing their most creative ideas, we create our Counsel of Leopards, who are part of a larger movement sweeping across the globe towards human unity.

Our impact is both tangible through our economic and social empowerment of women, and also intangible – invisible – often where it counts most.

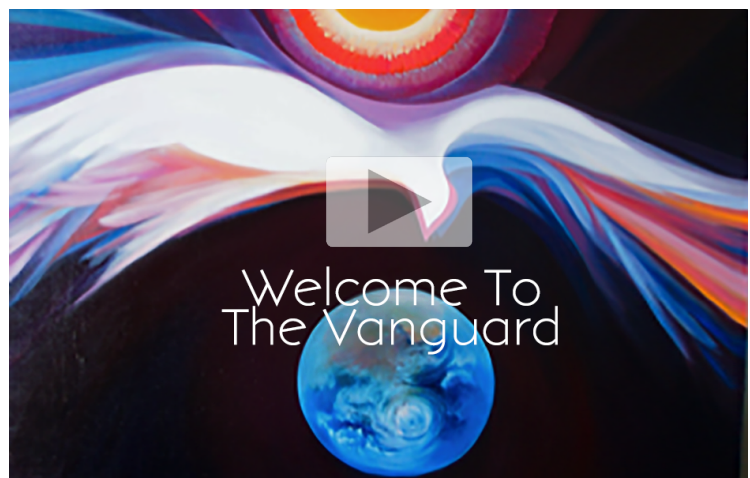
It is time for the awakening and development of the human heart.

We look forward to your participation in our work. Your contributions will have never been so timely. Your participation will bring us all Forward.

On behalf of Women Forward International, we welcome you to walk with us in the Vanguard.

A handwritten signature in black ink that reads "Kent Davis-Packard".

Kent Davis-Packard, Ph.D.  
President & Executive Director  
Women Forward International





## OUR IMPACT

Since 2019, Women Forward has partnered with over a dozen leading university programs, 20 partner organizations, 18 artists, and over 30 leading practitioners in the field of international relations to advance women for the advancement of humanity. Our alumni network, the WFI Counsel of Leopards, and our accompanying events, especially our annual Vanguard with our primary partners, UNITAR at the United Nations, have engaged with thousands of individuals, students, non-profits, private sector businesses and government agencies globally. Over the next five years we expect our impact to more than double.

With sustained funding over the next five years, WFI's programs will continue to advance women and the Sustainable Development Goals in four key areas:

WFI's Women's Leadership in Conflict Resolution programs will impact:

**500,000 Women**

### Women's Leadership in Conflict Resolution

WFI is supporting programs that seek to end the long-standing inequity in the representation of women's voices in leadership in conflict resolution, allowing women to create and advocate for the policies that affect them, their families, and their overall health and well-being.

WFI's Women's Economic Empowerment programs will impact:

**62,500 Women**

### Women's Economic Empowerment

Women Forward International is committed to supporting the development of vital frameworks that facilitate and empower women's entry into and full contribution to the economy.

WFI's Women in Sustainable Systems programs will impact:

**250,000 Women in Farming Families**

### Women in Sustainable Systems

WFI supports the equal inclusion, participation, and compensation of women playing vital roles in developing and maintaining sustainable systems in food, farming, and fashion.

WFI's Women's Education program will impact:

**7,500 Women**

### Women's Education

WFI supports the established finding that educating women leads to an increase in quality of life for women and families with regard to financial freedom, social inclusion, and awareness of issues that impact their health and well-being.



## Background and Mission of Women Forward International

Graduate students of international relations and public policy are among the most creative and inspired to bring about positive changes in their communities and in the countries in which they choose to work. They thirst to make their research of service to others. Too often, however, academic research on international relations focuses on the esoteric and does not consider the real impact on individuals and members of a community. The analytical skills learned in graduate school do not necessarily directly apply to the real world. Few programs bridge this gap between academia and practice, and fewer still address the empowerment and full contributions of women to society.

### Mission

Women Forward International puts research into service to the world. We create unique partnerships that lead to behavioral changes that advance women to advance humanity.

### How We Work

Recognizing that change comes from transformations in consciousness and culture rather than merely the enactment of laws and policies, WFI underlines to emerging leaders from graduate schools and all levels of management within our partner organizations the absolute necessity of gender equality in achieving their missions. We inspire these organizations to challenge and transform cultural norms at both the theoretical and operational levels, and address areas of need for greater equality in five key arenas: economic empowerment, education, leadership in conflict resolution; and sustainable systems.

“

WFI's visionary model of experiential learning is changing the game for graduate education in international affairs.

*Sienna Tompkins  
Georgetown University, Walsh School of Foreign Service*

”



“

Truly a spellbinding aura you helped to create this morning...you and your colleagues and the panel gave all those avid listeners and aspiring agents of change some very profound shoulders to stand on!

*Gerald Hildebrand*

*Director of the Center for Social Impact, Lynn University-  
about our event "A Call for a New Humanity"*

”



“

I am so moved by the efforts of all the constituencies affiliated with WFI and the most prescient understanding that the Arts are vital means for communicating, displaying and endorsing social justice around the world.

*Janice Koch, Ph.D.*

*Professor Emerita of Science Education, Hofstra University*

”

“

Instead of typical think-tank talking heads and the drone of stats and theories, [WFI] presented a living sense of courageous, creative women charting a real path to change.

*Ellis Pines*

*Vice President, Brand Strategy, Radancy, LLC*

”





*Women Forward International* partners with organizations and faculty over a number of years and therefore has a profound impact on the way these institutions think about women and the value of their contributions to the economic and political life of their communities. Each spring the students present their study results, best practices, and recommendations together with the sponsoring institutions in collaboration with WFI's primary partner, the United Nations Institute for Training and Research (UNITAR). The organizational partners, faculty, and students then disseminate the results through their networks and online publications. Through this outreach process, the studies inform the communities who will most benefit and be a force-multiplier for effecting real change. Concurrently, WFI supports the implementation of the key scholarly recommendations in collaboration with the partner organizations, ensuring immediate and lasting impact.



“

Many of my students said they 'never knew what a difference it makes to study an international security issue through a gender lens.' Already *Women Forward International's* support for this project has been life-changing for our students.

*Ambassador Nancy McEldowney  
National Security Advisor to Vice President Kamala Harris, former Director of  
Georgetown University's Master of Science of Foreign Service Program*

”





## 2020-2021 Impact Highlights

### Women's Economic Empowerment

- ❑ WFI's project with Pro Mujer and Columbia University's School of International and Public Affairs led to the creation of a 'gender scorecard' now being used by 17 companies in Mexico to identify gaps in supporting and investing in women entrepreneurs.
- ❑ WFI's project with The Ananda Group and Harvard University's Kennedy School of Government resulted in an association and business accelerator for women in the plant-based food industries that contributes to Mexico's achievement of nine of the Sustainable Development Goals.
- ❑ This Mexican business accelerator will provide information and training specifically designed for women entrepreneurs; it will offer a platform for networking, cross-learning and mutual support; and through the collaboration among members, the sector will accomplish projects with greater impact and boost the fulfillment of its shared mission for the benefit of humanity, animals and the planet.

## Women and Sustainable Systems

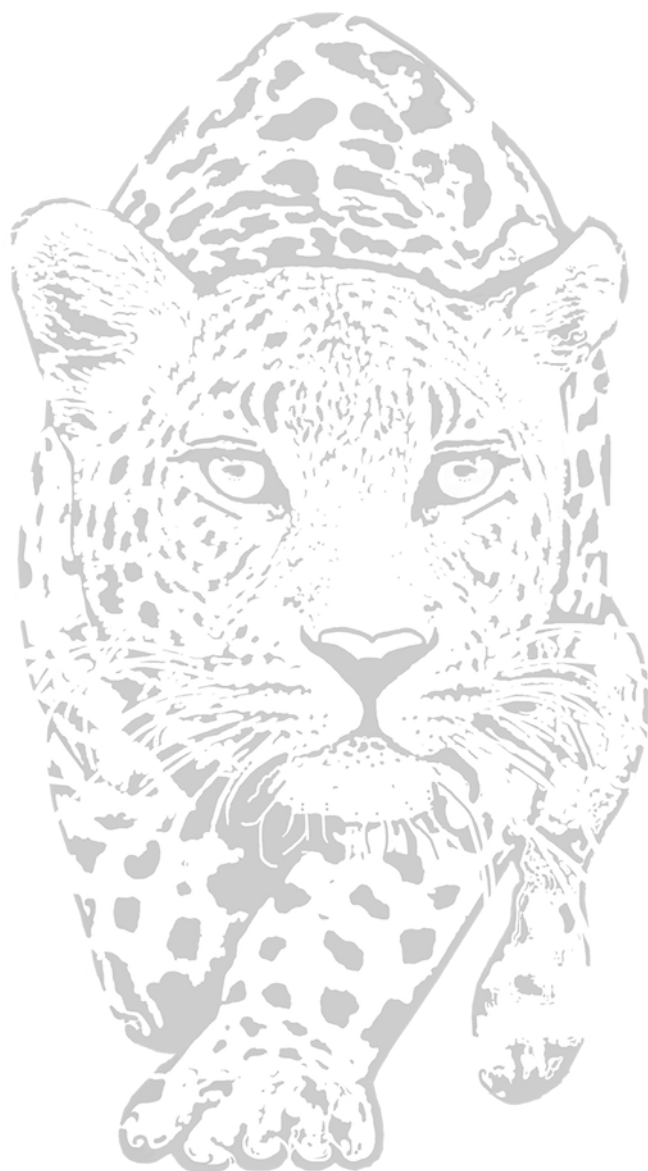
- WFI's project with the Partnership for Gender Equity (PGE) and Yale University refines a Gender Equity Index for at least two influential companies who work with a total of 10,000 farming families in Latin America to improve their services by reaching more women. This collaboration will help PGE to expand their program to more women in coffee farming communities and new agricultural sectors such as cocoa, tea, and spices, among others.
- As a result of WFI's collaboration with PGE, Yale University's Jackson Institute for Global Affairs created a practicum program class for WFI projects that advance women for the advancement of humanity.

## Women's Leadership in Conflict Resolution

- WFI's project with the European Network of Migrant Women and Sciences Po in Paris led to the creation of a capacity-building toolkit that will be used to train and empower 370 refugees in its first year.
- WFI's project with Georgetown University and nonprofits in Afghanistan to empower Afghan women negotiators in the peace process, our current scholarly team is creating with faculty experts a participatory toolkit for their inclusion in the negotiation process.

## Women and Education

- WFI's project with the Afghan Institute of Learning (AIL) and Lynn University to design the first private, women's only university in Afghanistan has already begun transforming mindsets on women and education in the country. [The United Nations Academic Impact \(UNAI\) initiative published an article about WFI's project on their website.](#)







## UN Partnership



### WFI Publications with the United Nations

(UN Women, UNITAR, and UNICEF)

Because WFI's university research projects meet the criteria necessary to make the Sustainable Development Goals a living reality, the United Nations Institute for Training and Research (UNITAR) has published each of our university client-based research reports. Each will also be made available to all UN member states, UN Women, and the wider public via [UNITAR's website](#).



*WFI President Dr. Kent Davis-Packard meets with Dr. Phumzile Mlambo-Ngcuka, Executive Director of UN Women*



## WFI's Research & Implementation Projects



WFI is expanding current partnerships and forging new collaboration to encompass [12 unique programs](#) to **Advance Women to Advance Humanity.**



Women Forward International thanks its donors and supporters, with special recognition for our founding donor, the Embassy of the State of Qatar, and The Heart's Path Charitable Foundation.





The [Counsel of Leopards](#) is Women Forward International's (WFI) convening of visionary and intrepid "leopards" quietly transforming the world through unity, collaboration, and service.

The Counsel is composed of inspired intellectuals, public servants, diplomats, and artists who have regularly put these principles into practice and can demonstrate and share their wisdom with the next generation, including all those who have participated in WFI's research projects to advance women to advance humanity.

Intimate "fireside" chats allow our circle of new leopards to explore fresh ideas and collaborate with seasoned leaders to ignite real and positive change in the world.

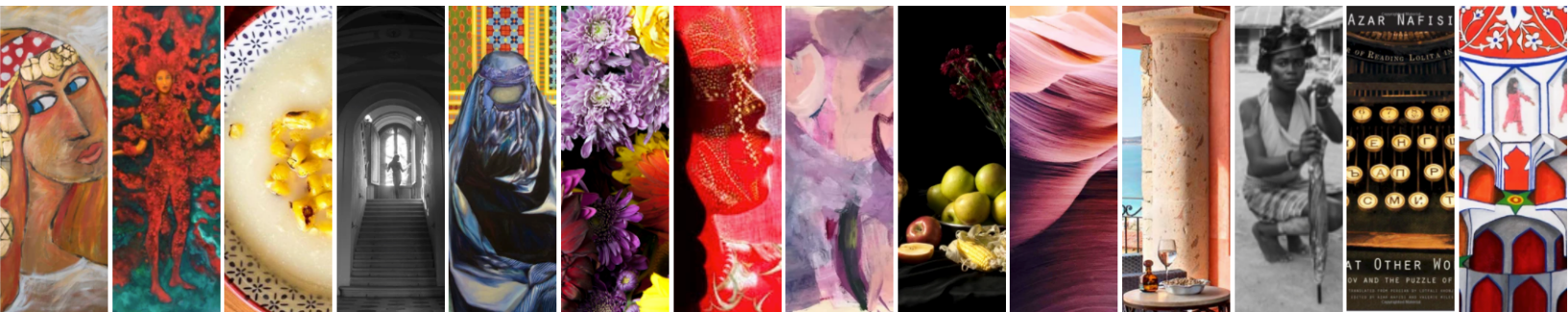




*In an era of walls, the [WFI Arts Counsel](#) leverages the power of art to break down barriers and build a new paradigm of life based on love, human dignity, and equality.*

*We invite you to explore the work of the artistic visionaries who are using art to imagine the unimaginable, giving voice to the voiceless and, in doing so, becoming an expression of human hope that disrupts and transcends rhetoric and redefines what is visible, thinkable, and possible.*

The [WFI Arts Counsel](#) is responsible for curating a culturally and artistically rich [event](#) each fall to amplify the impact of WFI's research and implementation programs by bridging mind and heart.



“

So inspiring to meet leaders from across the world sharing their thoughts on new humanity. Thrilled to share my poem which is recited by all the speakers cutting across all barriers of gender, race, caste...

To new humanity!

*Manasi Pradhan, activist, guest speaker at  
A Call for a New Humanity event, Oct 29th*

I really think the power of art for healing the things that happen to women is a really powerful method.

*Natalia Wills, Pro Mujer*

”





“

Women Forward's highly focused and professional work, including documentary research, expert interviews, and field research directly with women entrepreneurs, has provided us with invaluable insight into the reality of these women, their goals and the contribution they are seeking to make in the world. They have allowed us to understand the challenges and the limitations these women face, and to determine the most effective ways to empower them to overcome those challenges.

*Rocio Cavazos, The Ananda Group*

”

## Ways to Support WFI

Partners like you make it possible for WFI to empower the next generation of leaders to dare to innovate through creative partnerships real solutions to our world's most pressing challenges. WFI offers a wide range of opportunities for you to invest in our mission to advance women to advance humanity:

### Philanthropic Support

- ☐ Individual Gifts
- ☐ Annual Gifts
- ☐ Corporate Sponsorships
- ☐ In-Kind Donations of Products or Services
- ☐ Planned Giving

For more information on the ways you can become a WFI philanthropic partner, please contact Dr. Kent Davis-Packard, President & Executive Director [kent@womenforwardinternational.org](mailto:kent@womenforwardinternational.org)

and Wesley Spencer, Director of Arts Partnerships & Strategic Development

[wesley@womenforwardinternational.org](mailto:wesley@womenforwardinternational.org)

### Connecting through Social Media

Please contact Dania Abdalla, Program Officer [daniala@womenforwardinternational.org](mailto:daniala@womenforwardinternational.org)

## Research and Project Implementation

We welcome university teams and organizational partners. If you have a partnership idea, please submit a letter of interest on our contact form on our [website](#). Please include your proposed project title in the subject box.

### Joining our Network

WFI's Counsel of Leopards welcomes experts and practitioners to serve as advisors to our scholarly teams. WFI's Arts Counsel invites artists to use their medium to engage our audiences in nuanced conversations essential to social and cultural transformation. Membership in both Counsels is by invitation. If you are interested in participating in either network, please contact us.

### Counsel of Leopards

Dania Abdalla, Program Officer  
[daniala@womenforwardinternational.org](mailto:daniala@womenforwardinternational.org)

### Arts Counsel

Wesley Spencer, Director of Arts Partnerships & Strategic Development  
[wesley@womenforwardinternational.org](mailto:wesley@womenforwardinternational.org)